



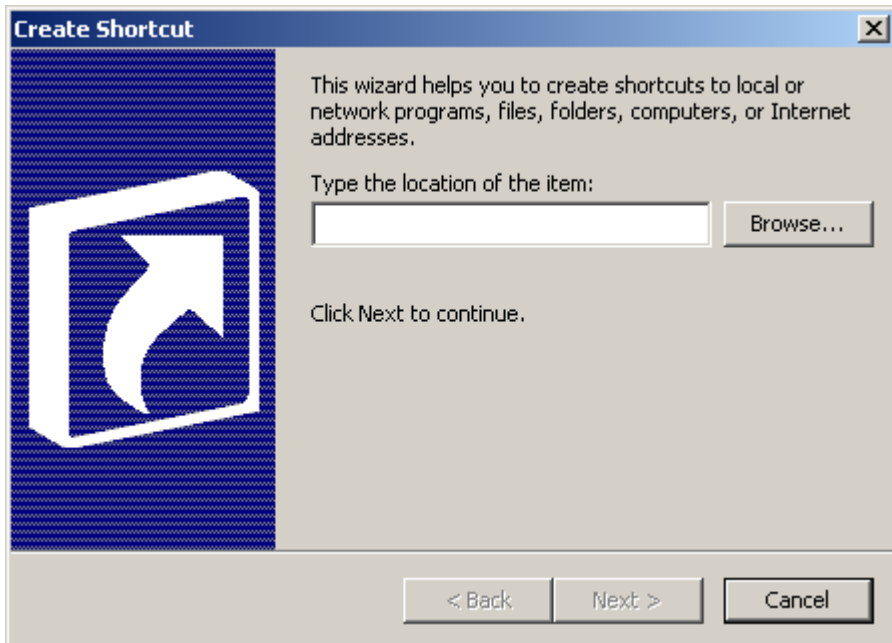
## Lan and Workstation Installation Instructions

The Manta courseware can be run in a shared environment, such as from a LAN file server or a shared IFS directory on a System i or iSeries system. (To be consistent with Windows terminology, we will refer to such a shared device as a *network drive*.) To run the Manta courseware in a shared environment, you must first install it on the network drive as described in the *Getting Started* pamphlet. After doing so, you can use the procedure described below to provide workstation access to the courseware.

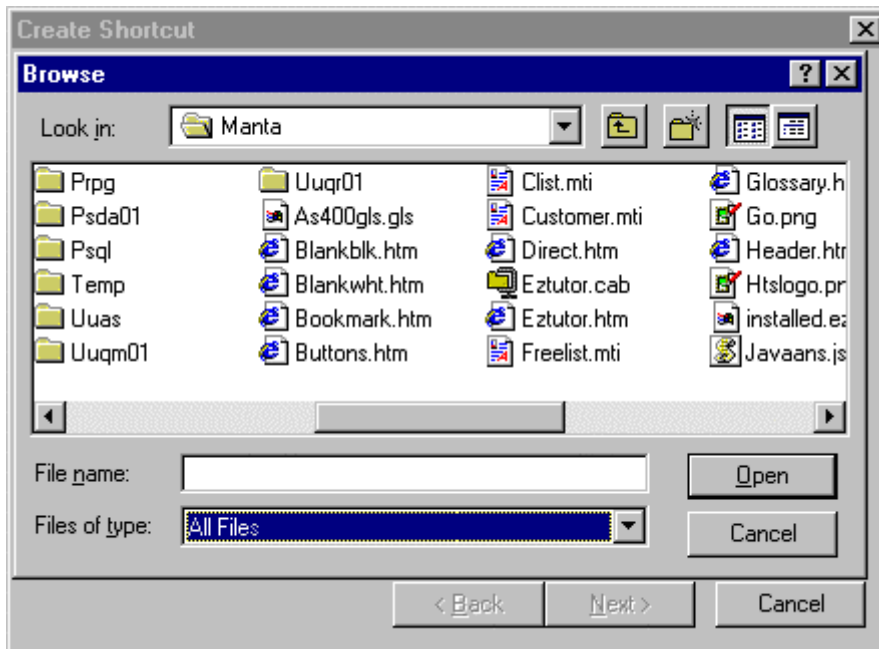
### Workstation Access to the Manta Courseware

The easiest way to provide access to the Manta courseware from a network workstation is to create a shortcut on the workstation's desktop. This can be accomplished by performing the following steps at the workstation:

1. If Sun's Java Plug-In has been installed on the workstation, use Windows facilities to map a drive letter to the network drive.
2. Right-click an unused area of the desktop.
3. Select **New** from the popup menu that is displayed, then select **Shortcut**.
4. You will then receive a *Create Shortcut* window similar to the following:



- Click the **Browse** button.
- Navigate to the network drive (using the drive letter, if you mapped one to the drive), then to the folder into which the Manta courseware was installed. (The installation program's default location is **C:\Manta**.) If the window includes a *Files of Type* field, make sure that **All Files** is specified as shown below:



- Select the file named EZTUTOR.HTM by double-clicking it.
- After returning to the *Create Shortcut* window, click the **Next** button.
- When you receive the *Select a Title for the Program Window*, enter a title of your choice (such as **Manta Training**). This is the title that will appear under the desktop icon. Then click the **Finish** button.

To access the courseware from the workstation, simply double-click the icon you created on your desktop.

## Contacting Manta

### By Phone

Sales and customer inquiries:	800-406-2682
Technical support	719-687-7928
Fax:	847-382-7199
International customers:	847-382-7198

### By E-Mail

Sales and customer inquiries:	sales@mantatech.com
Technical support:	support@mantatech.com

Windows and Internet Explorer are trademarks of Microsoft Corporation.

IBM, System i, and iSeries are registered trademarks of International Business Machines Corporation.

Licensed Material.

© 2005, 2007 Manta Technologies Inc. All rights reserved. Made in the United States of America.