

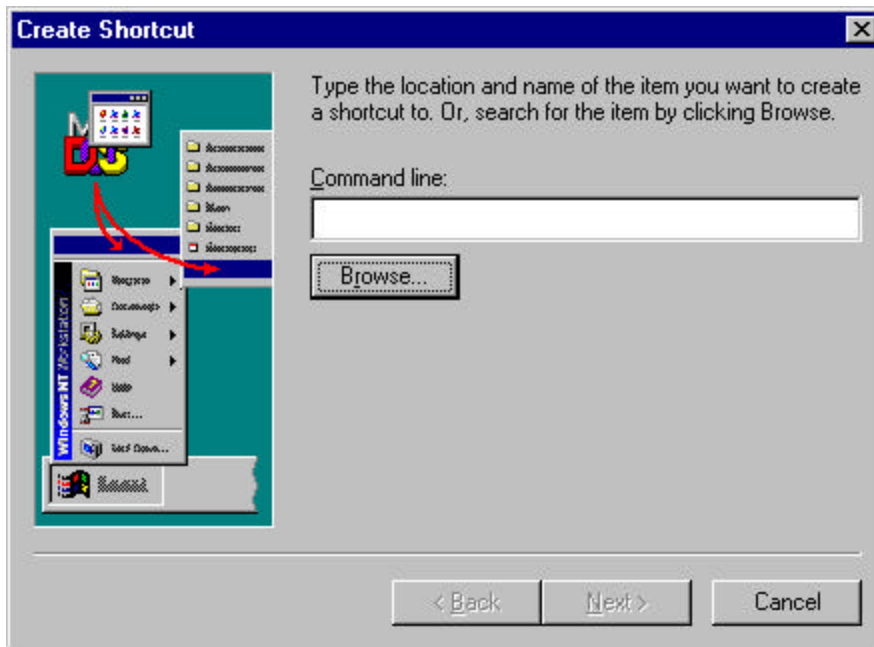
Lan Installation Instructions

The Manta courseware can be run in a shared environment, such as from a LAN file server or a shared IFS directory on an iSeries or AS/400 system. (To be consistent with Windows terminology, we will refer to such a shared device as a *network drive*.) To run the Manta courseware in a shared environment, you must first install it on the network drive as described in the *Installation Instructions and Utility Reference* pamphlet. After doing so, you can use the procedure described below to provide workstation access to the courseware.

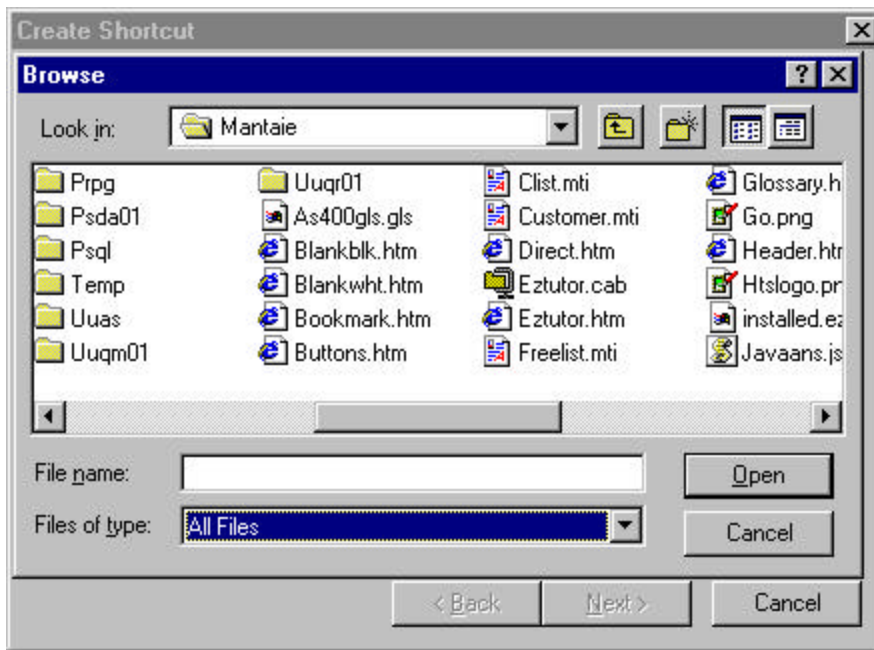
Workstation Access to the Manta Courseware

The easiest way to provide access to the Manta courseware from a network workstation is to create a shortcut on the workstation's desktop. This can be accomplished by performing the following steps at the workstation:

1. Right-click an unused area of the desktop.
2. Select **New** from the popup menu that is displayed, then select **Shortcut**.
3. You will then receive a *Create Shortcut* window similar to the following:



4. Click the **Browse** button.
5. Navigate to the network drive. Then navigate to the directory named **MANTAIE** underneath the directory into which the Manta courseware was installed. Make sure that **All Files** is specified in the *Files of type* field as shown on the next page.



6. Select the file named EZTUTOR.HTM by double-clicking it.
7. After returning to the *Create Shortcut* window, click the **Next** button.
8. When you receive the *Select a Title for the Program Window*, enter a title of your choice. This is the title that will appear under the desktop icon. Then click the **Finish** button.

To access the courseware from the workstation, simply double-click the icon you created on your desktop.

Special Considerations Regarding Sun's Java Plug-in

If Sun's Java Plug-in is installed on a workstation, there is a step you must perform before creating a shortcut to the Manta courseware. (The easiest way to determine if the Java Plug-in is installed on a system is to check the Windows Control Panel for the presence of a Java Plug-in icon.) Because the Java Plug-in does not recognize Windows system names, you must first map a drive letter to the network drive. You can map a drive letter to a network drive as follows:

1. Start the *Windows Explorer*.
2. Click the *Tools* pull-down menu and select the option to map a network drive.
3. Use the *Drive* field to select a drive letter and the *Path* field to specify the path to the network drive (in the form `\\computername\drivename`). You can make the drive assignment permanent by selecting the *Reconnect at logon* option.

When creating the shortcut, you must then use the designated drive letter when navigating to the network drive.

Contacting Manta

By Phone

Sales and customer inquiries:	800-406-2682
Technical support	719-687-7928
Fax:	847-382-7199
International customers:	847-382-7198

By E-Mail

Sales and customer inquiries:	sales@mantatech.com
Technical support:	support@mantatech.com

Windows and Internet Explorer are trademarks of Microsoft Corporation.
 IBM, AS/400, and iSeries are registered trademarks of International Business Machines Corporation.

Licensed Material.

© 2002 Manta Technologies Inc. All rights reserved. Made in the United States of America.