



Getting Started

Requirements

The Manta course presentation software is an application that runs in Microsoft's web browser, Internet Explorer (version 5.5 or newer). **(Because the software does not require an active Internet connection, it can run on a stand-alone PC.)** If you do not have Internet Explorer installed on your machine or are currently using an older version, you can install Internet Explorer 6 from the Manta CD. This is accomplished using the following steps:

1. Place the Manta CD in the CD-ROM drive.
2. Click the *Start* button on the Windows taskbar and choose *Run*.
3. In the **Open** box, type *drive:\ie6\ie6setup* (where *drive* is the letter of your CD-ROM drive), and then click **OK**.

The Internet Explorer installation program will guide you through the installation process.

Be aware that the application will not run correctly under other web browsers such as Netscape Navigator.

Installing the Manta Courseware

To install the Manta courseware:

1. Place the Manta Installation diskette in an available diskette drive.
2. Place the Manta CD in the CD-ROM drive.
3. Follow the setup instructions that automatically appear on your screen.

If the installation program does not start automatically after you insert the CD:

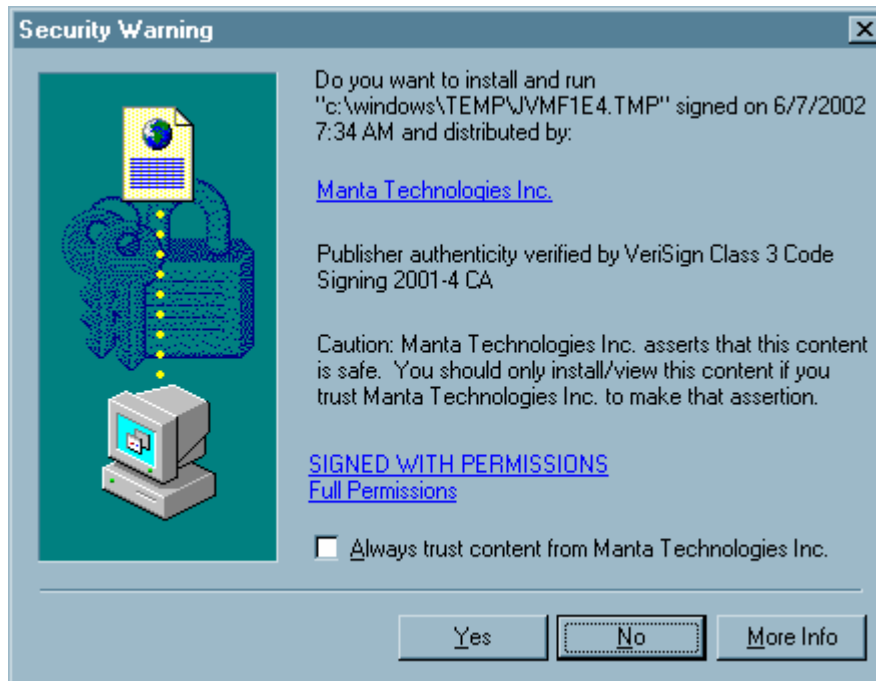
1. Click the *Start* button on the Windows taskbar and choose *Run*.
2. In the **Open** box, type *drive:\setup* (where *drive* is the letter of your CD-ROM drive), and then click **OK**.

Starting the Courseware

To access your Manta courses, double-click the **Manta Training** icon on your desktop. After the Manta logo and copyright screens are displayed, you will receive the Manta *Welcome* screen. If this is the first time you are taking a Manta course, click the *Help* button to see instructions for how to use the Manta courseware. Then, click the *Take a Course* button to begin taking courses.

Security Issues

As part of its processing, the Manta course presentation software stores and retrieves information on your system (or a server system). However, web browsers such as Internet Explorer do not allow browser-based applications to store information on your system without your permission. Therefore, after clicking the *Take a Course* button, you will receive either an Internet Explorer warning message or a Java warning message. The Internet Explorer warning message is as follows:



While the format of the Java warning message is slightly different, the content is the same.

With the Internet Explorer message, you can continue with the training by simply clicking the *Yes* button. Or, if you want to prevent this warning message from being presented each time you start the software, select the *Always trust content from Manta Technologies Inc.* box, and then click the *Yes* button. With the Java warning message, you can continue with the training by simply clicking the *Grant This Session* button. Or, if you want to prevent this warning message from being presented each time you start the software, click the *Grant Always* button.

Maintenance Functions

The Manta courseware includes several maintenance functions that you may find useful. To start the maintenance program, simply execute the installation program with the courseware already installed. Or, go to your Windows Control Panel and select **Add/Remove Programs**, and then **Manta iSeries Training Library**. If you have the Manta courseware installed on a LAN, be aware that the Maintenance program is available only at the system from which the courseware was installed.

The Repair Function

If an abnormal termination occurs while the Manta courseware is running (for example, a power outage occurs while you are taking a course), the control files used by the courseware may be corrupted. This will become apparent because you will be denied access to one or more of the courses in the library. If this occurs, you can correct the problem by selecting the **Repair** maintenance function. If the courseware is installed on a network drive, be aware that no other users can be taking courses when you run the Repair Library Utility. Doing so can cause damage to the courseware, which can be repaired only by re-installing it.

The Remove Function

The **Remove** maintenance function removes the Manta courseware from your system.

The Modify Function

The **Modify** maintenance function is used to add Manta products to a previously installed copy of the courseware. Detailed instructions will accompany the new installation diskette you receive after ordering additional products.

Contacting Manta

By Phone

Sales and customer inquiries:	800-406-2682
Technical support	719-687-7928
Fax:	847-382-7199
International customers:	847-382-7198

By E-Mail

Sales and customer inquiries:	sales@mantatech.com
Technical support:	support@mantatech.com

Windows and Internet Explorer are trademarks of Microsoft Corporation.
IBM, AS/400, and iSeries are registered trademarks of International Business Machines Corporation.

Licensed Material.
© 2003 Manta Technologies Inc. All rights reserved. Made in the United States of America.